



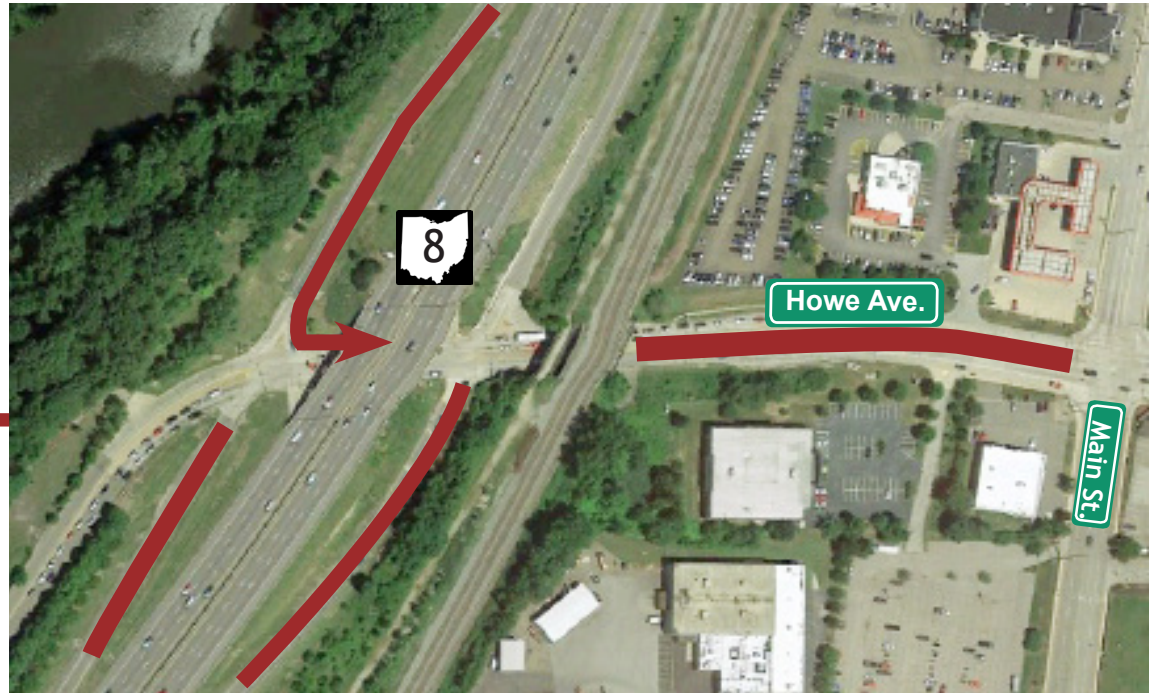
Howe Ave. Project Information

IN THE CITY OF CUYAHOGA FALLS

*Updated Version as of May 30, 2019

Work is scheduled to begin on a \$5.9 million project in late April 2019. This project includes pavement replacement on Howe Ave. between SR 8 and Bucholzer Blvd. Project also includes drainage, curbs, sidewalks, lighting and new signage. The entire project is scheduled to be completed in the fall of 2020.

To get the latest updates on this project please visit www.howeavenue.com



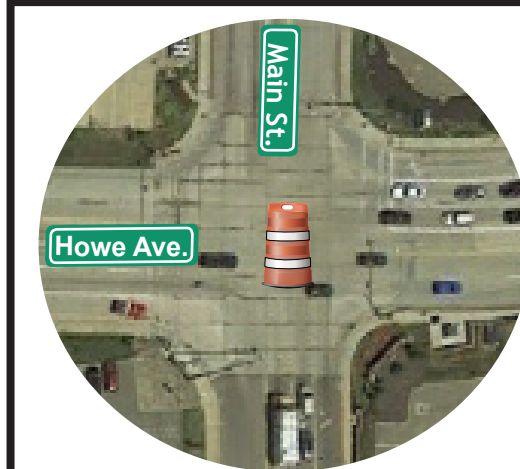
April 29 - early June

Beginning on Monday, April 29, one lane of traffic will be maintained in each direction on Main St. Also, Howe Ave. between Main St. and just east of SR 8 will be **closed** for intersection improvements.

During this time, the flowing ramps below will be **closed**:

- SR 8 southbound entrance ramp from Howe Ave.
- SR 8 northbound exit ramp to Howe Ave.
- No left turns from southbound SR 8 to Howe Ave.

The detour will be Tallmadge Ave to Home Ave. to Howe Ave.



Mid May

The west side of the Main St. and Howe Ave. intersection will be **closed** for seven days.

Late May

Southeast corner of the Main St. and Howe Ave. intersection will be **closed** for seven days.

Late May / Early June

Northeast corner of the Main St. and Howe Ave. intersection will be **closed** for seven days.



www.howeavenue.com



@ODOT_Akron



ODOTD4



Real Time Traffic Updates: OHGO.com or App

ODOT District 4 Public information
(330) 786-2209 D04.pio@dot.ohio.gov



Howe Ave. Project Information

IN THE CITY OF CUYAHOGA FALLS

*Updated Version as of May 30, 2019

Summer 2019

Beginning in June through late October, Howe Ave. **eastbound** will be closed from Main St. to Bucholzer Blvd. Also, pavement replacement between The Plaza at Chapel Hill's entrance and Buchholzer Blvd. will begin.

Access to businesses will be maintained by utilizing frontage streets behind the businesses along Howe Ave.

Eastbound Howe Ave. through traffic will be detoured Main St. to Independence Ave. to Buchholzer Blvd.

Howe Ave. **westbound** will remain **open** during this phase and will be maintained in it's current location for the first half of the phase and then shifted to the south side of the road. Once this phase is completed, two way traffic in the yellow section will return.

Spring 2020

Beginning in May through September, Howe Ave. **eastbound** will be closed from Main St. to The Plaza at Chapel Hill's entrance. Also, pavement replacement will begin from Main St. to The Plaza at Chapel Hill's entrance.

Access to businesses will be maintained by utilizing frontage streets behind the businesses along Howe Ave.

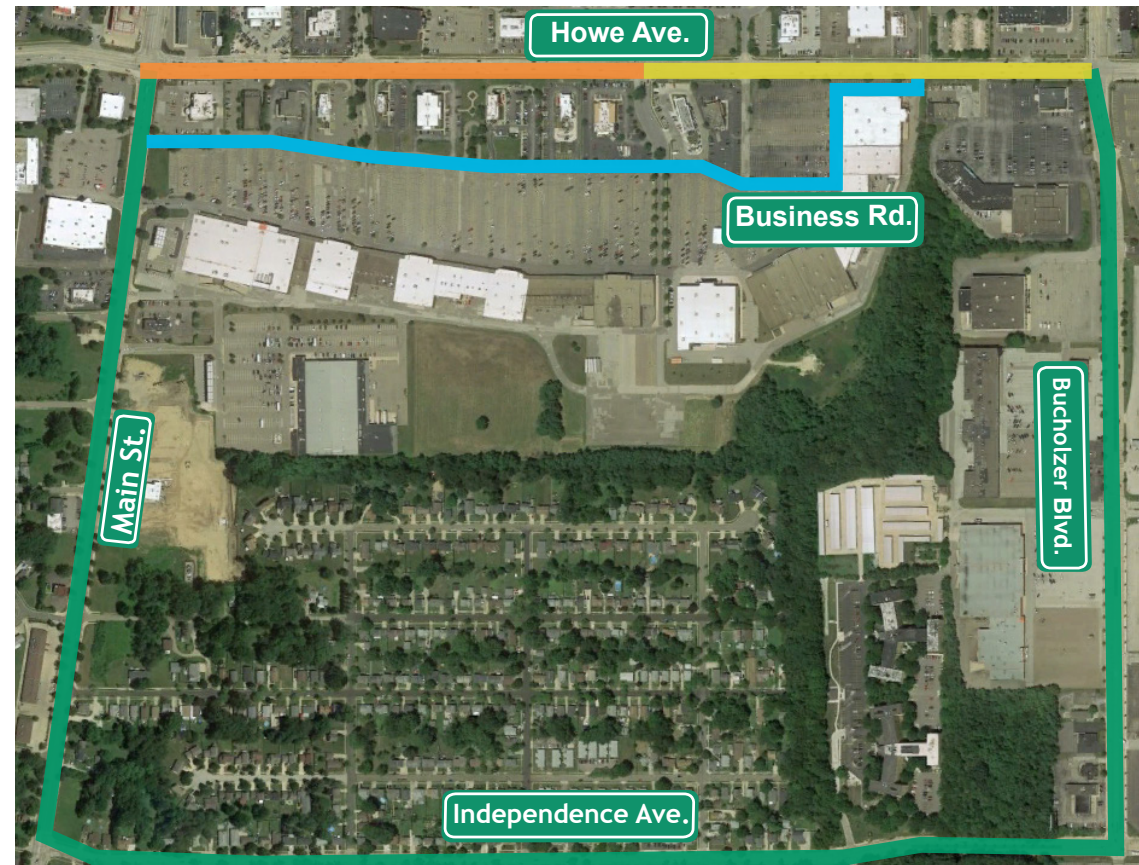
Eastbound Howe Ave. through traffic will be detoured Main St. to Independence Ave. to Buchholzer Blvd.

Howe Ave. **westbound** will remain **open** during this phase and will be maintained in it's current location for the first half of the phase and then shifted to the south side of the road.

All lanes of traffic will be re-opened by the holiday shopping season.

Late Summer / early Fall 2020

Howe Ave. between SR 8 and Bucholzer Blvd. will have various lane restrictions for the placement of the surface course of asphalt. Access to all businesses will be maintained.



www.howeavenue.com



@ODOT_Akron



ODOTD4



Real Time Traffic Updates: OHGO.com or App

ODOT District 4 Public information
(330) 786-2209 D04.pio@dot.ohio.gov